



Join in Celebrating GIS Day™!

What Is GIS?

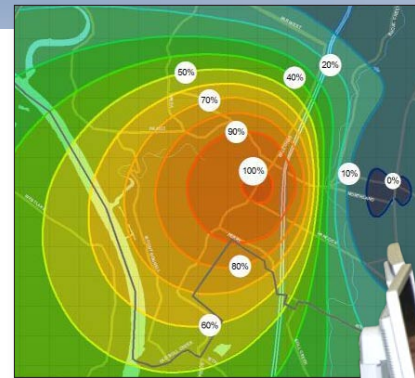
More than one million people across the globe rely on geographic information system (GIS) technology to solve problems and make better decisions by thinking and planning geographically. GIS combines computer hardware, software, and data to collect, manage, and analyze geographic information.

With GIS, users can view relationships, processes, patterns, and trends in the form of maps, globes, reports, and charts. From mapping wildfires to finding the best location for your favorite coffee shop, GIS helps people see how the world works and changes.

What Is GIS Day?

Since 1999, more than 10,000 organizations have participated in GIS Day by hosting events such as open houses, hands-on workshops, community expos, career fairs, schoolwide assemblies, and mapping projects. GIS Day success is due to the hard work and dedication of GIS users around the world who see the importance of sharing their GIS knowledge with others.

How We Use GIS



Event Details

Date:

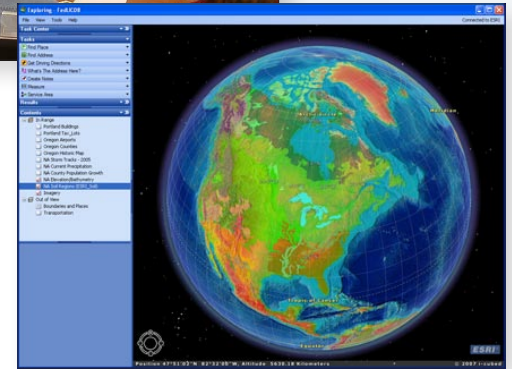
Time:

Location:

Agenda

Please Place
Postage Here

GIS Day™



www.gisday.com